



4CS LOCATIONS:

Apples & Bananas Roseland Preschool
950 Sebastopol Rd. Santa Rosa, CA 95407
(707) 544-3077
Facility #493008487

Flowery Preschool
17600 Sonoma Hwy. Sonoma, CA 95476
(707) 935-4244
Facility #493008692

Gold Ridge Preschool
1455 Golf Course Dr. Rohnert Park, CA 94928
(707) 586-1253
Facility #49008727

Willow Creek Preschool
2536 Marlow Rd. Santa Rosa, CA 95403
(707) 544-3077
Facility #493006901

Wright Preschool
Serving Wright School District
(707) 544-3077
Opening Fall 2017

Windsor Preschool
79 Pleasant Ave. Santa Rosa, CA 95403
(707) 836-7068
Facility #49006190

Bennett Valley Preschool
2250 Mesquite Dr. Santa Rosa, CA 95405
(707) 526-4504
Facility #493008615

Cloverdale Preschool
330 N. Washington St. Cloverdale, CA 95425
(707) 544-3077
Facility #493009258

Gold Ridge Preschool
1455 Golf Course Dr. Rohnert Park, CA 94928
(707) 586-1253
Facility #49008727

Old Elm Preschool
305 W Payran St. Petaluma, CA 94952
(707) 782-0408
Facility #493004931

Paulin Creek Preschool
2614 Paulin Dr. Santa Rosa, CA 95403
(707) 565-3420
Facility #493005826

Sonoma Preschool
620 5th St W. Sonoma, CA 95476
(707) 996-3494
Facility #490109271

Petaluma Preschool
401 S. McDowell Blvd. Petaluma, CA 94954
(707) 763-4990
Facility #490109272



4Cs PRESCHOOLS

Quality Education in a Safe and Caring Learning Environment

This institution is an equal opportunity provider.

Community Child Care Council
131-A Stony Circle, Suite 300
Santa Rosa, CA 95401

Phone: (707) 544-3077
E-mail: info@sonoma4cs.org
Website: sonoma4cs.org

Follow us on:



4CS MISSION: To inspire our community to support the well-being of every child and to improve the quality and availability of child care in Sonoma County.

PART DAY

8AM-11AM & 12:30PM-3:30PM M-F

FULL DAY

7AM-5:30PM M-F



WELCOME TO 4Cs

4Cs high quality preschools offer both part day and full day schedules and are located throughout Sonoma County. We understand that early learning experiences in the first five years of a child's life are crucial to promote healthy brain development, form healthy attachments and relationships, a positive sense of self, and a thirst for learning.

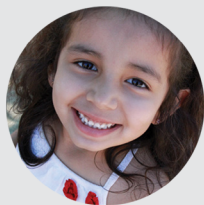
4Cs believes in supporting all aspects of your child's development. Teachers and children enjoy nutritious meals and snacks together to promote healthy minds and bodies. 4Cs will support you and your child to ensure your child is ready for success in school and beyond. Please schedule a tour today - we look forward to meeting you and your child.

4Cs is a proud participant of Quality Counts Sonoma County, promoting excellence in early care and education.



CURRICULUM

4Cs Preschools have a play-based constructivist approach to early childhood education. Incorporating the California Department of Education Preschool Foundations and Learning Frameworks, curriculum is designed to spark children's interests and curiosity, promoting in-depth exploration and learning. Teachers guide children's engagement in the classroom, integrating language, literacy, art, music, dramatic play, science and math throughout the day. Children also learn essential social skills, like communication, collaboration and critical thinking. 4Cs preschools provide hands-on, process oriented activities, inviting children's wonder and curiosity both indoors and out. 4Cs is committed to the success of the children in our community and to building a foundation of learning for school readiness, future leadership and accomplishment.



QUALITY MATTERS

YOUR CHILD WILL PARTICIPATE IN



A diverse dual-language classroom where both English and Spanish languages enrich the environment.



Activities that encourage hands-on learning and promote school readiness skills.



Maintaining a school garden where flourishing fruits and vegetables guide nutrition education.

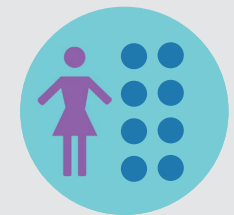
YOU WILL APPRECIATE



Partnerships with teaching staff and volunteer opportunities in the classroom.



Child assessments, individual portfolios and teacher conferences held twice a year.



Superior child/teacher ratio, with eight children for every adult.